

SIZE & CONFIGURATION			DIMENSIONAL CHART					
SCALE SIZE	FIRST	TERMINAL	MINIMUM FOUNDATION OPENING ("A")	DECK LENGTH "B"	TOTAL L/C "C"	"D"	"E"	VARIANCE FROM STD
30'	15'	15'	30'-5"	30'-3 3/4"	29'-9"	14'-10 1/2"	14'-10 1/2"	- NONE -
35'	17.5'	17.5'	35'-5"	35'-3 3/4"	34'-9"	17'-4 1/2"	17'-4 1/2"	- NONE -

NOTES:

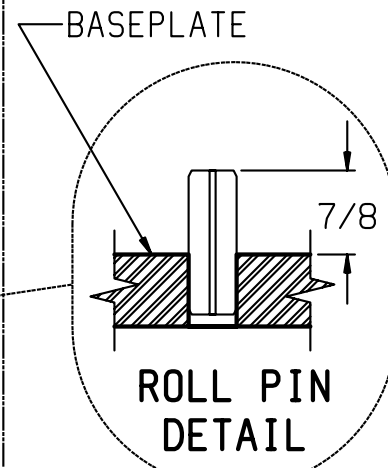
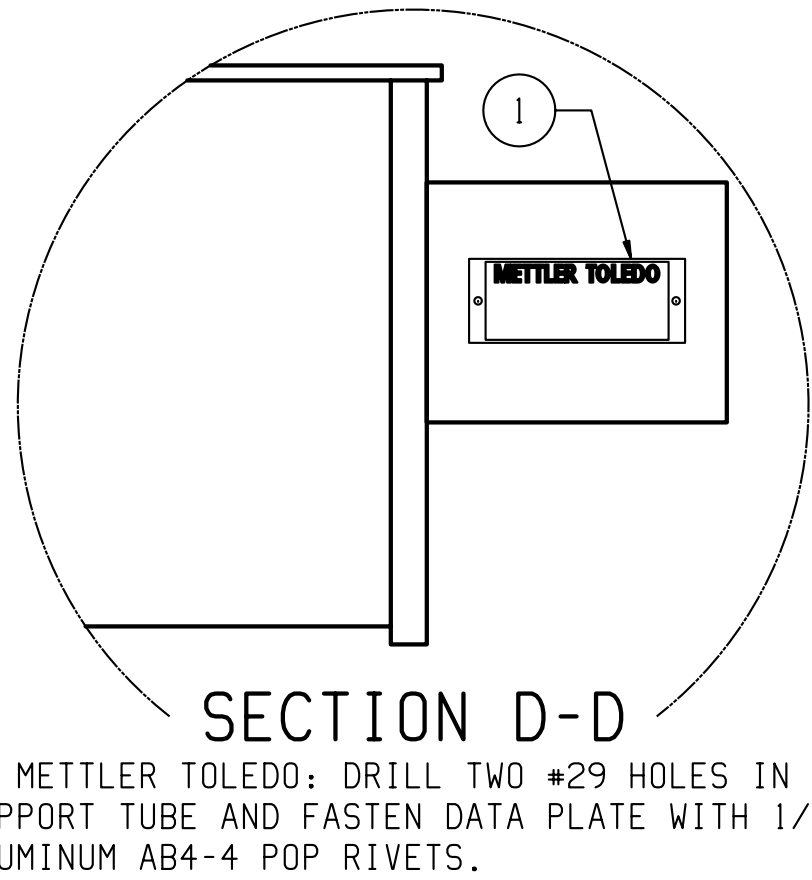
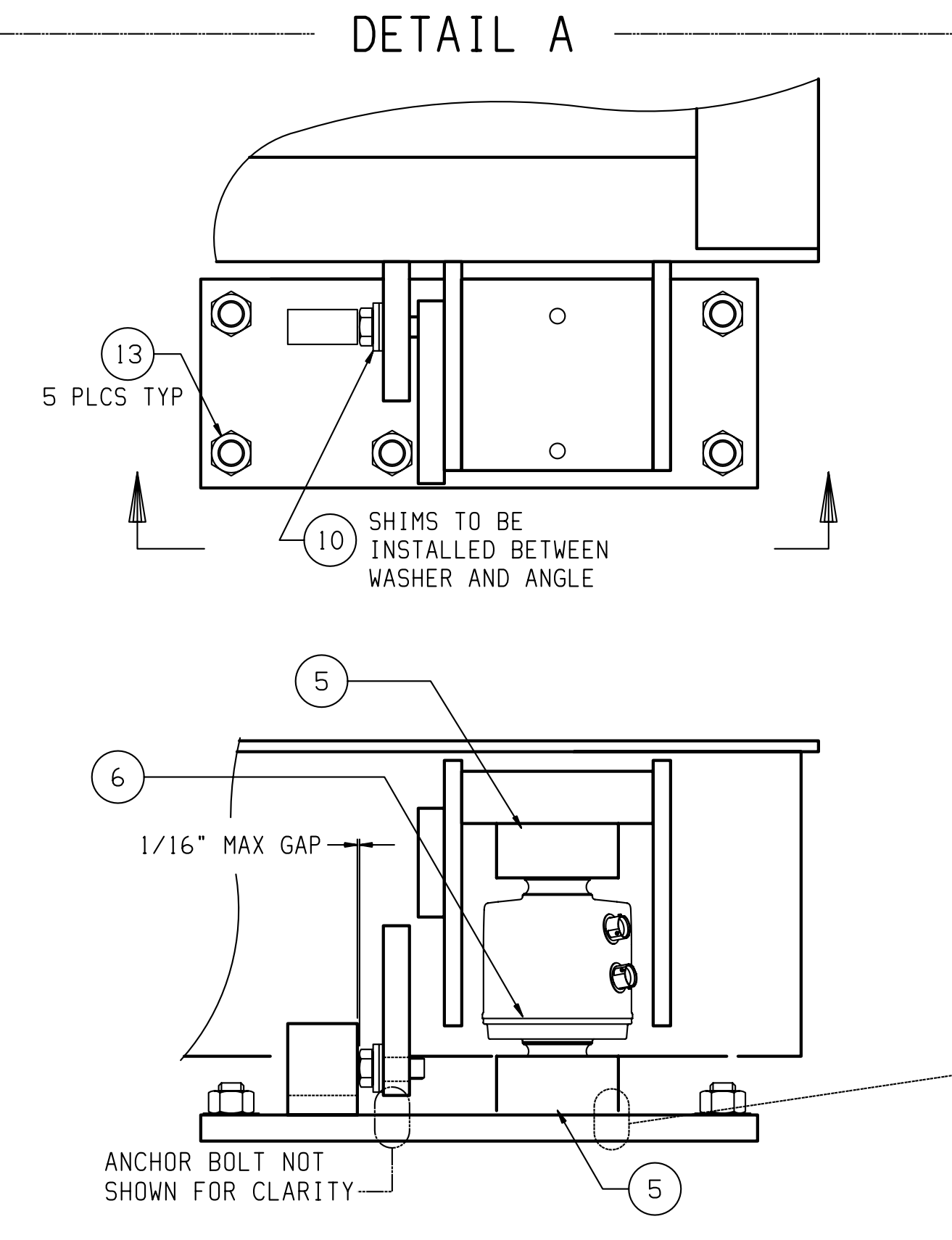
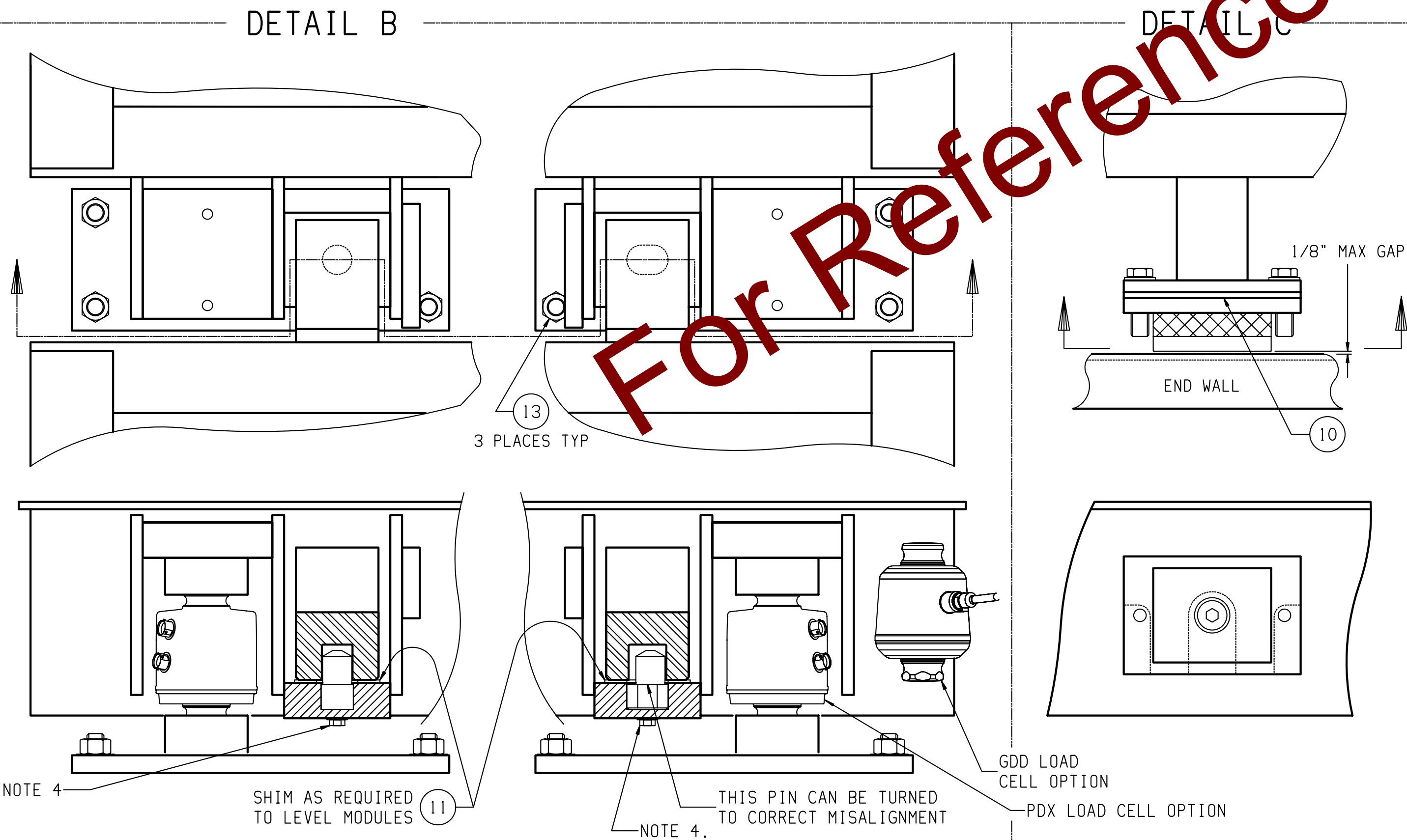
- 1a. FOUNDATION LENGTH DIMENSION SHOWN IS NOMINAL. ACTUAL TOLERANCE IS -0" +1". (DIMENSION "A")
END BUMPER PLATES ARE REQUIRED. FLUSH CAST PLATES WITH NON-SHRINK EPOXY GROUT. IF NOT ALREADY PRESENT.
SEE FOUNDATION DRAWINGS FOR DETAILS.
- 1b. SURFACE MOUNTING OF BUMPER PLATES TO THE END WALL WILL INCREASE END GAPS AND IS NOT RECOMMENDED.
DEBRIS BUILD-UP WILL BE ACCELERATED IN MOST APPLICATIONS.
- 1c. IF SURFACE MOUNTED BUMPER PLATES ARE USED, THE FOUNDATION LENGTH ("A") SHOWN IN THE CONFIGURATION TABLE
WILL BE SHORTER THAN THE ACTUAL FOUNDATION OPENING.
- EXAMPLE: TWO 3/4" SURFACE MOUNTED PLATES ARE USED AS BUMPER TARGETS.
THE EXISTING FOUNDATION OPENING WILL BE 1.5" GREATER THAN FOUNDATION LENGTH "A" GIVEN IN THE TABLE.
EACH END GAP WILL INCREASE FROM A NOMINAL 1" TO 1 3/4".
2. APPLY LOCTITE #242 TO ALL GAP COVER BOLTS.
3. IF CABLE CONNECTORS BECOME CONTAMINATED, REMOVE CONTAMINANTS WITH PROVIDED CONNECTOR CLEANER.
4. APPLY LOCTITE #242 TO COUPLER PIN BOLTS AND TORQUE 1/3 TURN PAST SNUG.
(ONLY IF COUPLER PINS ARE REMOVED.)

IMPORTANT:

THE INTERIOR SURFACE OF ALL LOAD CELL
RECEIVERS (BOTH TOP AND BOTTOM) MUST BE
LUBRICATED WITH RECEIVER GREASE
DURING CELL INSTALLATION.

NOTES FOR HAZARDOUS AREA WIRING:

- H1. THE HAZARDOUS AREA WIRING AND LIGHTNING PROTECTION KIT IS
SPECIFIC FOR THE SUPPLY VOLTAGE AND THE INDICATOR USED.
IT MUST BE INCLUDED FOR INTRINSICALLY SAFE COMPLIANCE IN
HAZARDOUS LOCATIONS.



14	1	68004258	MTX CLEANER, CONNECTOR
13	26	68004325	ANCHOR BOLT EXPANSION 3/4-10 x 5.5
12	1	30236492	INSTALL KOP VTX2X1 FLUIDS 1-2 MODS
11	1	30465416	COUPLING KOP 7560
10	1	30465415	CHECKING KOP 7560
9	1	61086712 30351768	KOP PDX WIRING 6LC D2J3 KOP GDD WIRING VTX2X1/7560 2-MOD
8	1	TERM	STANDARD TERM MODULE
7	1	FIRST	STANDARD FIRST MODULE
6	6	42904891 72236271	LOAD CELL, PDX, 50+ LOAD CELL, GDD, 30+
5	3	30465438 30465439	LOAD CELL ASSEMBLY 7560 KOP PDX 2LC LOAD CELL ASSEMBLY 7560 KOP GDD 2LC
4	2	68004241	BUMPER BASEPLATE RIGHT
3	2	68004240	BUMPER BASEPLATE LEFT
2	2	68004239	BASEPLATE
1	1	61071325	DATA PLATE

ITEM	QTY	PART NUMBER	DESCRIPTION
MAJOR BILL OF MATERIAL			
REV	CHANGE	BY	DATE
A	ADDED 35' (-4.0) CONFIG	KRS	08/02/16
B	ADDED GDD AND VC KOP	NLD	02/26/18
SCALE .25		DATE 02/04/13	
DRN CMD APPD JLB			
TITLE			
7560SD GLO PDX/GDD 2-MOD			
UNLESS OTHERWISE SPECIFIED, ALL DIMENSIONS ARE IN INCHES, AND DIMENSIONAL TOLERANCES ARE:			
FRACTIONAL .XX ±.02			
DECIMAL .XX ±.02			
ANGULAR ±.5°			
THIS PRINT IS FURNISHED WITH THE UNDERSTANDING THAT THE ESSENCE THEREOF WILL NOT BE REPRODUCED IN WHOLE OR IN PART WITHOUT WRITTEN AUTHORIZATION OF METTLER-TOLEDO, LLC. ALL DESIGNS ARE THE PROPERTY OF METTLER-TOLEDO, LLC AND WILL BE PROTECTED BY PATENTS.			
61807450			
REV			
B			